

THE CORPORATION OF THE TOWN OF LATCHFORD

BY-LAW NO: 13/1357

BEING A BY-LAW to declare real property to be surplus to municipal needs and requirements.

WHEREAS Section 268(1) of the Municipal Act, S.O. 2001, C. 25 as amended, requires the council of a Municipality to pass a by-law establishing procedures, including the giving of notice to the public, governing the sale of land;

AND WHEREAS the Corporation of the Town of Latchford passed By-law No. 677/05 on September 14, 2005 establishing the procedures for disposing of land;

AND WHEREAS Section 268(3)(a) of the Municipal Act, S.O. 2001, C.25 as amended, requires the Council of a Municipality to declare land to be surplus.

NOW THEREFORE THE Council of the Corporation of the Town of Latchford hereby enacts as follows:

1. **That the following properties are declared surplus:**

Lot 342 Hillview ST.	PLAN M57NB LOT 342 PCL 16481SST
Block 68 Gillies Limit	Gilles Limit BLK 68 PT MC, WB 85PCL 13499SST

READ a first, second and

Third time and finally passed on the 19TH day, of December, 2013



Mayor



Clerk

THE CORPORATION OF THE TOWN OF LATCHFORD

BY-LAW NO: 13/1357

BEING A BY-LAW to declare real property to be surplus to municipal needs and requirements.

WHEREAS Section 268(1) of the Municipal Act, S.O. 2001, C. 25 as amended, requires the council of a Municipality to pass a by-law establishing procedures, including the giving of notice to the public, governing the sale of land;

AND WHEREAS the Corporation of the Town of Latchford passed By-law No. 677/05 on September 14, 2005 establishing the procedures for disposing of land;

AND WHEREAS Section 268(3)(a) of the Municipal Act, S.O. 2001, C.25 as amended, requires the Council of a Municipality to declare land to be surplus.

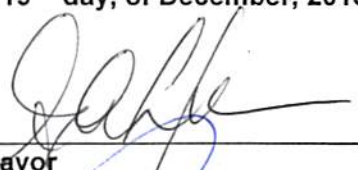
NOW THEREFORE THE Council of the Corporation of the Town of Latchford hereby enacts as follows:

1. That the following properties are declared surplus:


Lot 342 Hillview ST.	PLAN M57NB LOT 342 PCL 16481SST
Block 68 Gillies Limit	Gilles Limit BLK 68 PT MC, WB 85PCL 13499SST

READ a first, second and

Third time and finally passed on the 19TH day, of December, 2013



Mayor



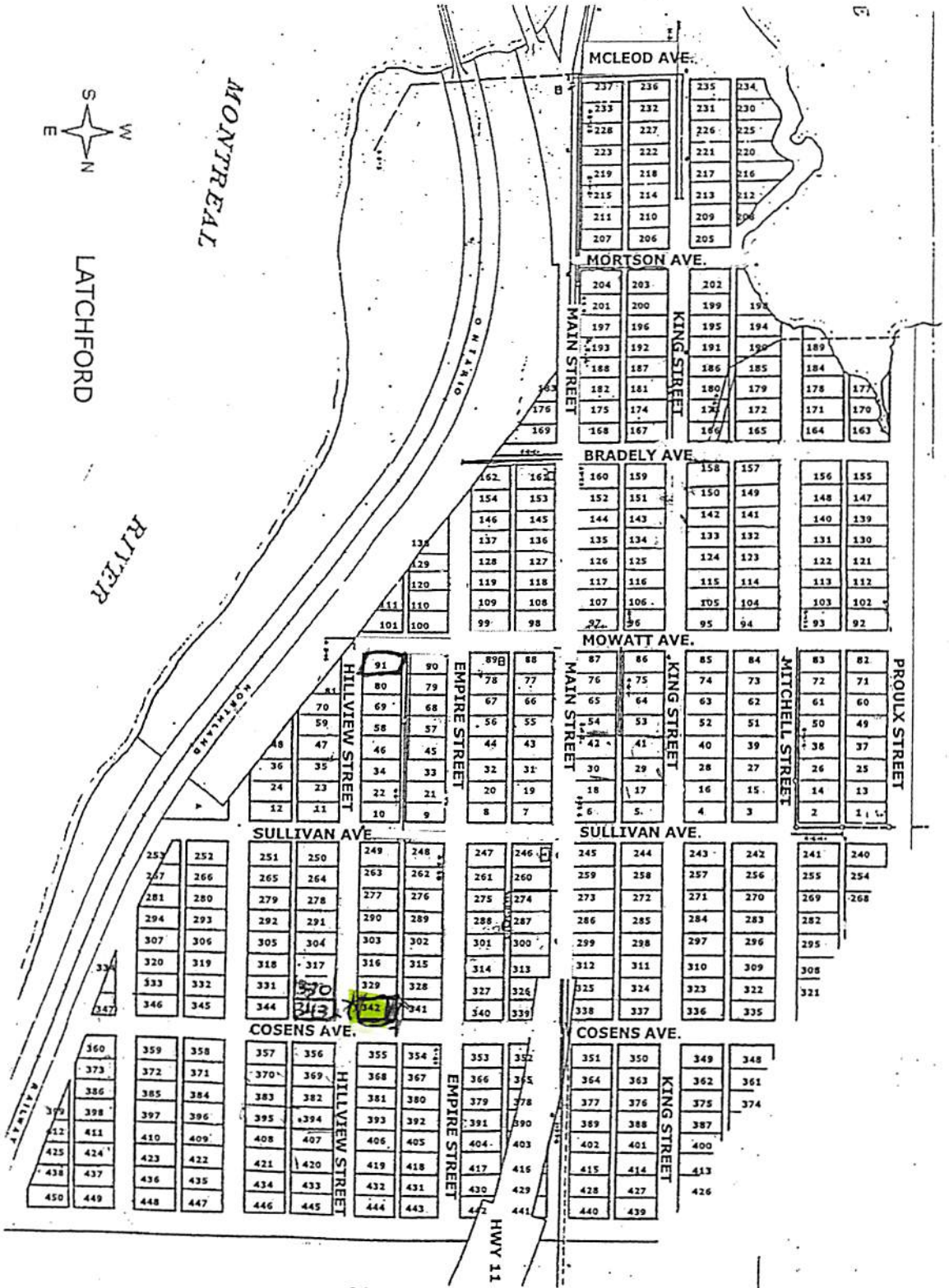
Clerk



LATCHFORD

MONTREAL

RIVER



HWY 11

R/LAW

KEMP PIRIE

Barristers, Solicitors and Notaries
Website: www.nllaw.ca

George W. Kemp, B.Comm., LL.B.
Kathryn J. Pirie, B.A., LL.B.

F300
Phone: (705) 647-7353
Fax: (705) 647-6473
E-mail: nllaw@ntl.sympatico.ca

September 20, 2013

SEP 25 2013

The Corporation of the Town of Latchford
P.O. Box 10
Latchford, ON P0J 1N0

Attention: L. Remillard, CFO

Dear Lise:

Re: Notice of Vesting-Foley-PIN 61381-0195

Further to our letter to you dated August 29, 2013, we enclose herewith a copy of the updated PIN relating to the above-mentioned matter.

This completes the last step in the tax arrears procedure and we are closing our file.

Yours very truly,

KEMP PIRIE

George W. Kemp

/mdv
Encl.
taplatchford2011foleyforwardPIN

INTERNAL USE ONLY
NOT FOR SALE

LAND
REGISTER
OFFICE #54

PARCEL REGISTER (ABBREVIATED) FOR PROPERTY IDENTIFIER
61392-0195 (27)
SUBJECT TO RESERVATIONS IN CROWN GRANT

PAGE 1 OF 1
PREPARED FOR MERTCO
ON 2013/09/19 AT 13:37:15

PROPERTY DESCRIPTION:

PCL 11499 SRC SST; PT BLK 66 GILLES LIMIT DESIGNATED AS LOCATION M85 GILLES LIMIT IN THE TROGANI PROVINCIAL FOREST AS IN TP12685; DISTRICT OF TIMISKAMING, DISTRICT OF TIMISKAMING

PROPERTY BEARER:

ESTATE/QUALIFIER:
PER SIMPLE
ABSOLUTE

CROWN GRANT SEE TP12685. CORRECTION: MEMBERSHIP FIELD UPDATED PURSUANT TO DT41931 ON 2013/09/19 BY MERTC, COLLEEN.

DATE CREATION DATE:
2005/10/24

**OWNER'S NAMES
THE CORPORATION OF THE TOWN OF LATCHFORD**

CAPACITY SHARE

REG. NUM.	DATE	INSTRUMENT TYPE	AMOUNT	PARTIES FROM	PARTIES TO	GRANT/CHGD
** PRINTOUT INCLUDES ALL DOCUMENT TYPES (EXCLUDED INSTRUMENTS NOT INCLUDED) **						
DT41931	2013/09/27	APL (GENERAL)		THE CORPORATION OF THE TOWN OF LATCHFORD		C
REMARKS: DT14284						

NOTE: ADJOINING PROPERTIES SHOULD BE INVESTIGATED TO ASCERTAIN DESCRIPTIVE CHARACTERISTICS, IF ANY, WITH DESCRIPTION REPRESENTED FOR THIS PROPERTY.
NOTE: ENSURE THAT YOUR PRINTOUT STATES THE TOTAL NUMBER OF PAGES AND THAT YOU HAVE PICKED THEM ALL UP.

FOR INTERNAL USE ONLY
NOT FOR SALE

LAND
REGISTRY
OFFICE #54

PARCEL REGISTER (ABBREVIATED) FOR PROPERTY IDENTIFI

PAGE 1 OF 1
PREPARED FOR MENTECO
ON 2013/09/19 AT 13:36:16

61361-0133 (LT)

SUBJECT TO RESERVATIONS IN CROWN GRANT

PROPERTY DESCRIPTION: PCL 16481 SEC S&T; LT 342 PL N57NB COLEMAN SRD; S/7 LT42548, LATCHFORD; DISTRICT OF TIMISKAMING

PROPERTY REMARKS: CORRECTION: OWNERSHIP FIELD UPDATED PURSUANT TO DT41932 ON 2013/09/19 BY MENTS, COLLEEN.

ESTATE/QUALIFIER: RECENTLY.
FEE SIMPLE FIRST CONVERSION FROM BOOK
ABSOLUTE CAPACITY SHARE

OWNERS' NAMES
THE CORPORATION OF THE TOWN OF LATCHFORD

EIN CREATION DATE:
2005/10/24

REG. NO.	DATE	INSTRUMENT TYPE	AMOUNT	PARTIES FROM	PARTIES TO	CERT/ CIRD
DT41932	2013/08/27	APL (GENERAL)		THE CORPORATION OF THE TOWN OF LATCHFORD		C
REMARKS: DT41932						
** PRINTOUT INCLUDES ALL DOCUMENT TYPES (DELETED INSTRUMENTS NOT INCLUDED) **						

NOTE: ADJOINING PROPERTIES SHOULD BE INVESTIGATED TO ASCERTAIN DESCRIPTIVE INCONSISTENCIES, IF ANY, WITH DESCRIPTION REPRESENTED FOR THIS PROPERTY.
NOTE: ENSURE THAT YOUR PRINTOUT STATES THE TOTAL NUMBER OF PAGES AND THAT YOU HAVE PICKED THEM ALL UP.

KEMP PIRIE

Barristers, Solicitors and Notaries
Website: www.nllaw.ca

George W. Kemp, B.Comm., LL.B.
Kathryn J. Pirie, B.A., LL.B.

Phone: (705) 647-7353
Fax: (705) 647-6473
E-mail: nllaw@ntl.sympatico.ca

SEP 25 2013

September 20, 2013

The Corporation of the Town of Latchford
P.O. Box 10
Latchford, ON P0J 1N0

Attention: L. Remillard, CFO

Dear Lise:

Re: Notice of Vesting Fetterly-PIN 61381-0133

Further to our letter to you dated August 29, 2013, we enclose herewith a copy of the updated PIN relating to the above-mentioned matter.

This completes the last step in the tax arrears procedure and we are closing our file.

Yours very truly,

KEMP PIRIE

George W. Kemp

/mdv
Encl.
taplatchford2011fetterlyforwardPIN

P.O. Box 1540, 22 Armstrong Street, New Liskeard, Ontario, Canada, P0J 1P0